

CM2003 – Exhibitors

Banverket

Swedish National Rail Administration
SE 781 85 Borlänge
Tel: +46 243 445000
Email: banverket@banverket.se
www: banverket.se

Banverket is the public authority with responsibility for the Swedish railway network. This involves following and promoting developments in the railway sector, assisting the Swedish Parliament and government on railway issues, taking responsibility for the operation and administration of state-owned track infrastructure, co-ordination local, regional and inter-regional rail traffic and supporting research and development in the railway sector. The Swedish railway network consists of around 15,300 track kilometres. About 80 percent of this is state-owned rail infrastructure. Banverket's infrastructure also includes approximately 13,000 kilometres of fibre-optic cable, located alongside the track.

Bombardier Transportation

SE 721 23 Västerås
Tel: +46 21 317000
Fax: +46 21 123543
www: transportation.bombardier.com

Bombardier Transportation activities in the Nordic countries as well as our latest delivered trains, Itino (DMU) and Regina (EMU), will be displayed at the stand.

CHARMEC

Department of Applied Mechanics
SE 412 96 Göteborg
Tel: +46 31 7721511
Fax: +46 31 7723827
www: charmec.chalmers.se

CHARMEC is a Centre of Excellence in Railway Mechanics at Chalmers University of Technology, Gothenburg, Sweden. See www.charmec.chalmers.se for further information.

Duroc Rail AB

Kontorsgatan 37
SE 973 42 Luleå
Tel: +46 920 35414
Fax: +46 920 35405
Email: olof.nilsson@duroc.se
www: duroc.se

Duroc Rail performs traditional maintenance as well as Duroc treatment of railway wheels and rail products for tough conditions.

Epsilon HighTech AB

Lindholmospiren 9
SE 417 56 Göteborg
Tel: +46 31 7449100
Fax: +46 31 7449299
www: epsilongroup.net

Epsilon HighTech offer simulation based product development for international operating clients in the Vehicle, Nuclear, Offshore, and Life Science branches.

European Rail Research Institute (ERRI)

Australiëlaan 13
NL 3526 AB Utrecht
Tel: +31 30 2324252
Fax: +31 30 2368914
Email: rail_research@erri.nl
www: erri.nl

The European Rail Research Institute (ERRI), set up in 1950 by the International Union of Railways (UIC) under the name of "ORE", is a foundation under Dutch law, responsible for carrying out research, studies and tests in fields of common interest. ERRI currently boasts 34 Participants and 9 Affiliates from a total of 30 countries, including research organisations in the USA, Japan, South Africa, India and Korea. ERRI will inform about projects carried out in the field of contact mechanics, mechanical wear, roughness and noise and present TWINS, a Track-Wheel Interaction Noise Software.

Greenwood Engineering A/S

H.J. Holstvej 3-5C
DK-2605 Broendby
Tel: +45 36360200
Fax: +45 36360001
Email: miniprof@miniprof.dk
www: greenwood.dk

Greenwood Engineering A/S develops and produces measuring equipment for the road and the railway sector. In the field of the railway industry, Greenwood Engineering represents the MiniProf instruments - a measuring device for monitoring the cross sectional profile of wheels and rails.

KTH Railway Group

Royal Institute of Technology
SE 100 44 Stockholm
Tel: +46 8 7906000/7745
Fax: +46 8 205268
Email: stefan@ekc.kth.se
www: kth.se/fakulteter/centra/jarnvag

The KTH Railway Group exhibits roll-up posters and papers showing their research activities within railway mechanics and related areas.

Lucchini Sweden AB

Box 210
SE 735 23 Surahammar
Tel: +46 220 34700
Fax: +46 220 34780
Email: info@lucchini.se
www: lucchini.com

The Lucchini Group is the only manufacturer in the world able to offer the rail transport sector steel products intended both for the railway infrastructure and for rolling stock.

Luleå Tekniska Universitet

Div. of Operation and Maintenance Engineering
SE 971 87 Luleå
Tel: +46 920 491826
Fax: +46 920 491935
www: jytc.luth.se

The main purpose of the centre is to co-ordinate the railway research works being pursued at different Departments and Centres at the University and to facilitate the contacts between researchers and the railway sector in general. The centre is established jointly by the Swedish Railway Administration, the LKAB ore transport company (MTAB), Duroc Rail and Luleå University of Technology among others.

Product Technology Partners Ltd

Newton House, 147 St Neots Rd
Hardwick, Cambridge CB37QJ
Tel: +44 1954 212806
Fax: +44 1954 212808
Email: mjs@ptpart.co.uk
www: railmeasurement.com

Railmeasurement supplies state-of-the-art equipment, both hand-held and train-based, to measure the rail's longitudinal profile.

Railway Gazette International

Quadrant House, Sutton
Surrey, SM2 5AS, UK
Tel: +44 208 6523278
Fax: +44 208 6523738
Email: railway.gazette@rbi.co.uk
www: railwaygazette.com

The world's leading international management and technical publication circulated to operators and manufacturers of all rail-based systems in over 138 countries.

SP Swedish National Testing and Research Institute

Box 857
SE 501 15 Borås
Tel: +46 33 165000
Fax: +46 33 102015
Email: erland.johnson@sp.se
www: sp.se

SP, performs laboratory testing, calculations, simulations and research within a broad range of technical fields. Examples shown in the exhibition are: Full scale component mechanical testing, Metrology, Measurement and calculation of railway noise, railway ballast modelling and testing.

UNIFE

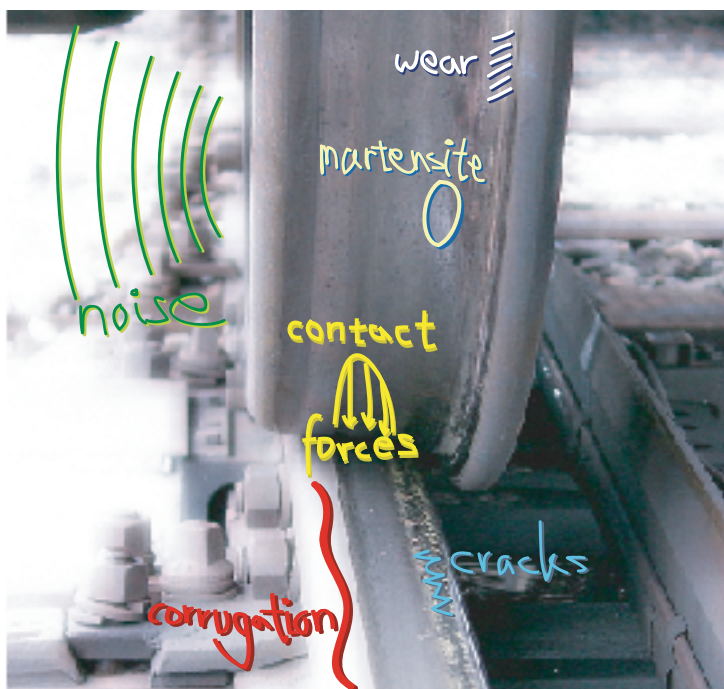
221, Avenue Louise (Bte 11)
BE 1050 Bussels
Tel: +32 26261260
Fax: +32 26261261
Email: mail@unife.org
www: unife.org

UNIFE, the Union of European Railway Industries, is the European network for the railway supply industry. It is a professional association representing the interests of the 100 largest and medium sized companies of the railway supply industry. A further 1000 suppliers of railway equipment are associated members through their National Associations.

Ødegaard & Danneskiold-Samsøe A/S

Titangade 15
DK 2200 Copenhagen N
Tel: +45 35311000
Fax: +45 35311001
Email: uds@oedan.dk
www: odegaard.dk

Consulting engineers in railway noise and vibration control engineering. Provides wheel and rail roughness measurement services. Sells roughness measurement equipment.



6th International Conference on
**Contact Mechanics
and Wear of
Rail/Wheel Systems**

Gothenburg, Sweden, June 10 –13, 2003

In cooperation with



Main sponsor

LUCCHINISWEDEN

Sponsors



SPENO



Railway Technical Research Institute

SweMaint

voestalpine

SCHIENEN GMBH

NRC - CNRC

National Research Council Canada